



One year on: health equity in Cheshire and Merseyside

Professor Michael Marmot

@MichaelMarmot

<http://www.instituteofhealthequity.org>

<http://www.instituteofhealthequity.org>



The last 12 months in
Cheshire and Merseyside

Progress in Cheshire and Merseyside

- Fair employment charters
 - And working with businesses in Cheshire East and Liverpool
- Child poverty in Sefton
- Marmot leads
 - Meeting regularly, sharing best practice, asking questions
 - Tracking recommendations, some areas going further



Cheshire and Merseyside in the UK and global context

Rising prices, lower budgets, increasing poverty

UK food price inflation at third-highest level since 2008

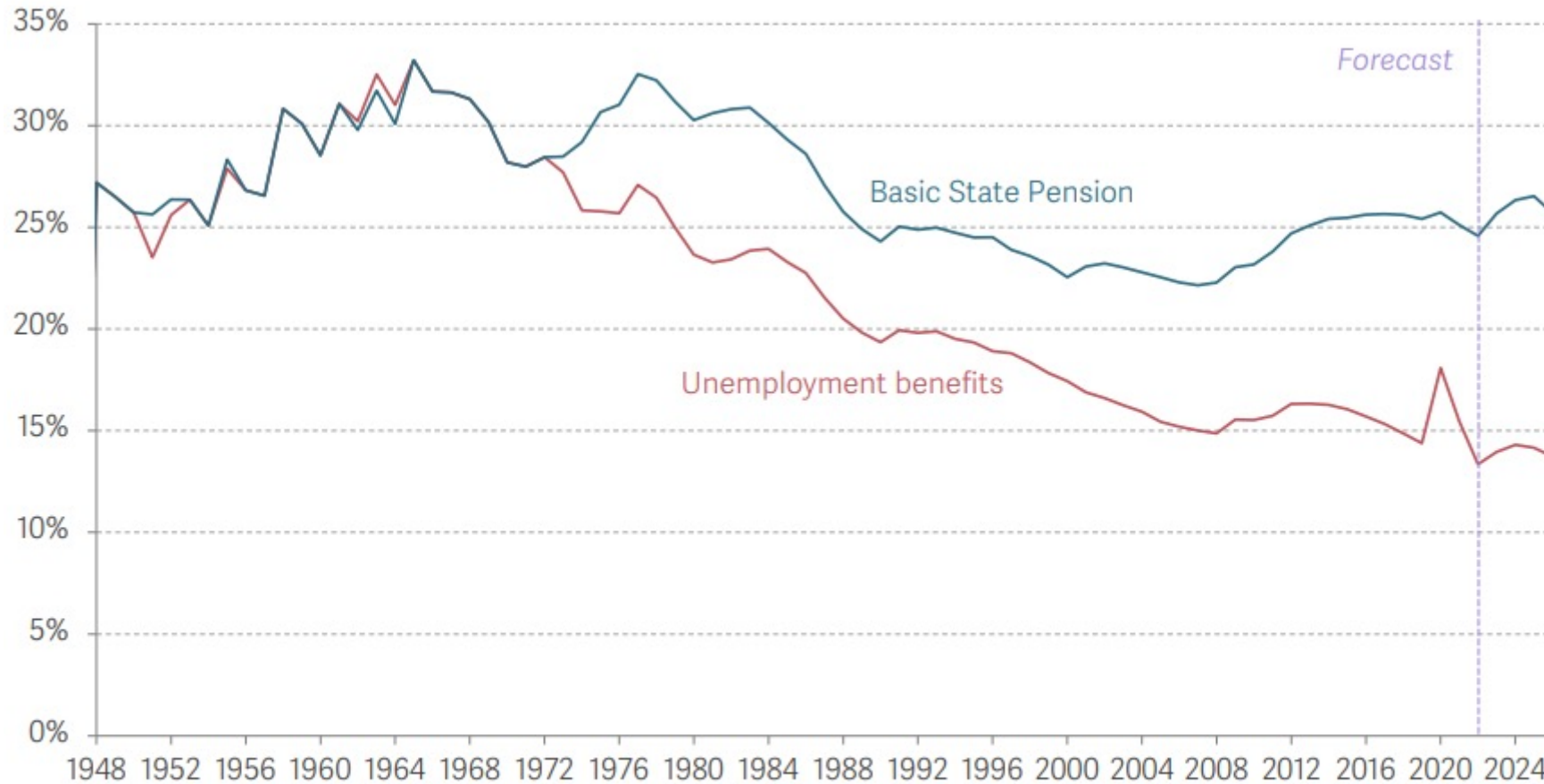
UK must act over poverty, housing and equal rights, says UN body

English councils: the budget cuts that are threatening 'levelling up'

Number of UK children in food poverty nearly doubles in a year to 4m

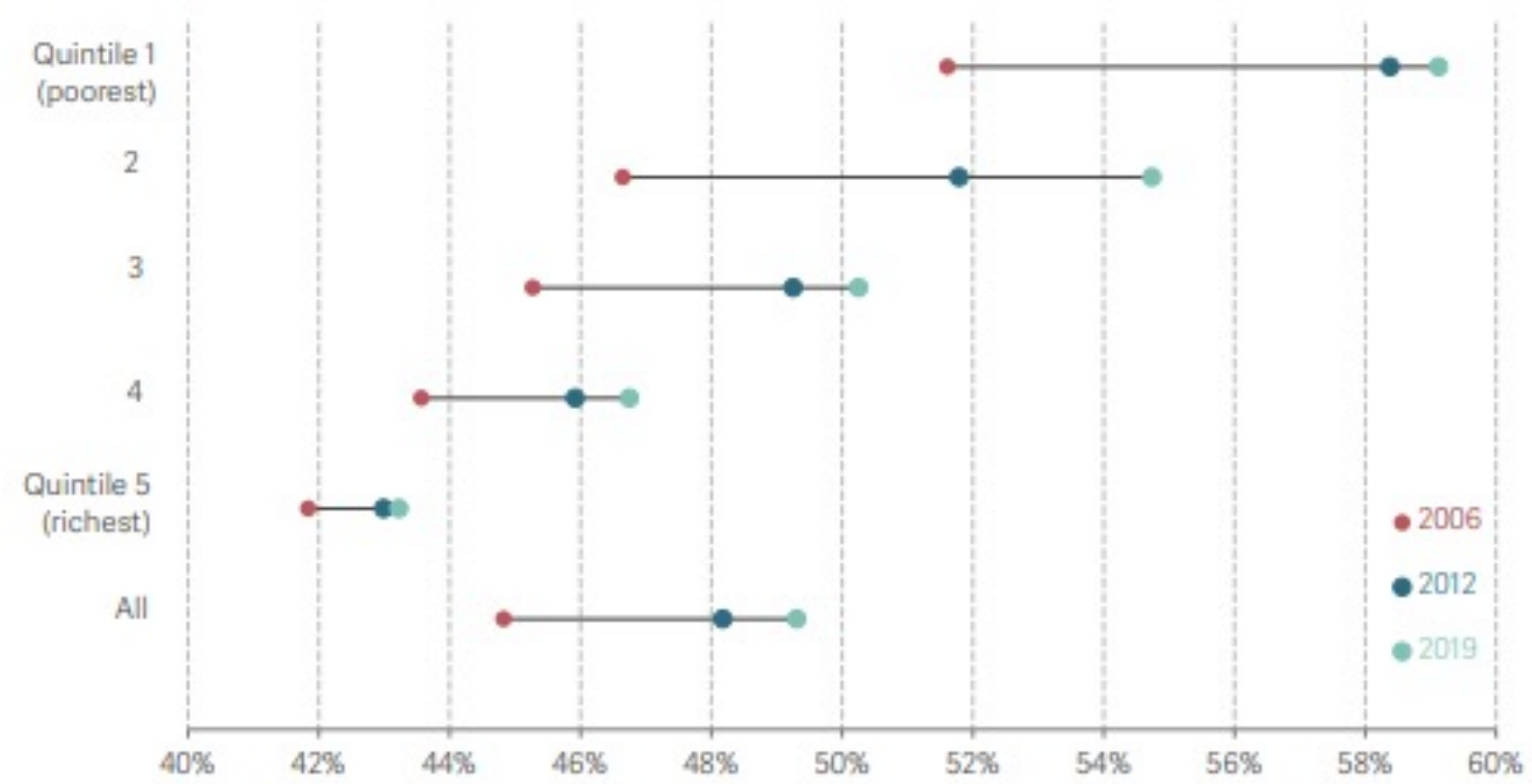
'Real' cuts to council services from 2024, says leader

Value of selected benefits as a share of Average Weekly Earnings: UK



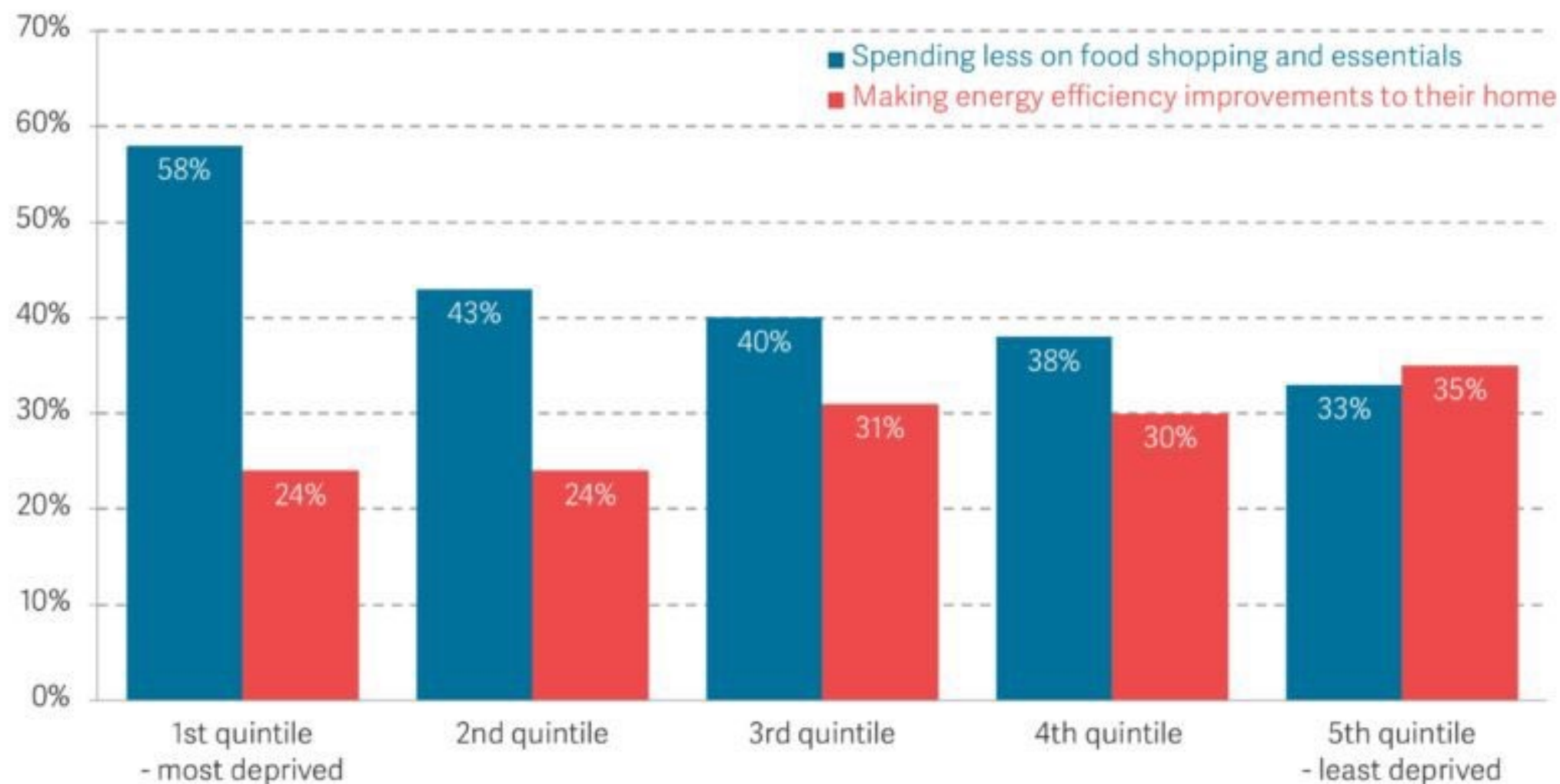
Source: Analysis of DWP, Abstract of Benefit Statistics; ONS, CPI; OBR, Economic and Fiscal Outlook March 2022; Bank of England, Monetary Policy Report May 2022.

Proportion of equivalised non-housing household consumption spent on 'essentials', by quintile of the working age equivalised net household income distribution: UK, 2006-2019



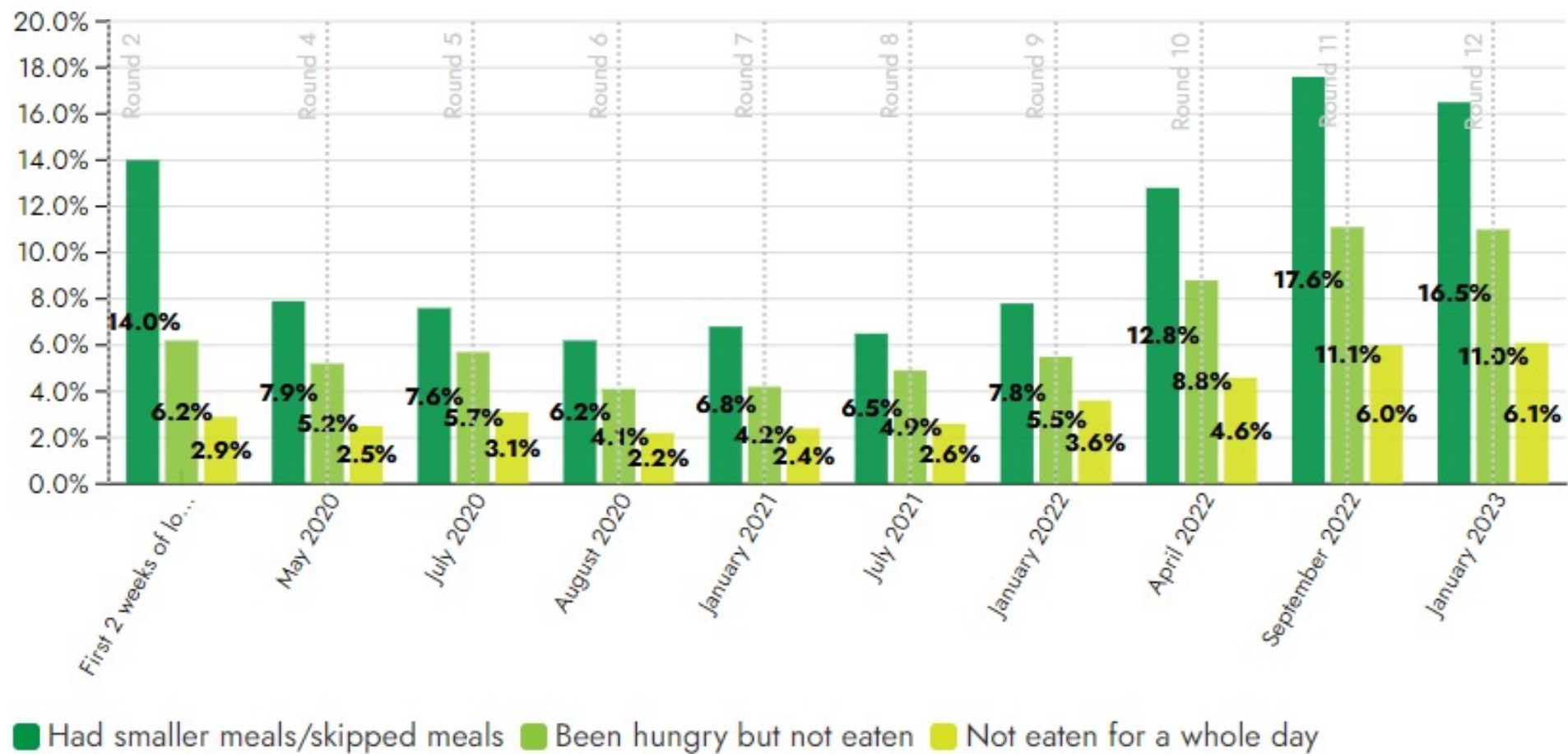
Notes: 'Essentials' covers food, fuel, clothing and transport. Distribution calculated on the basis of income after housing costs. We present trends in consumption for each individual, rather than just for the head of the household.
Source: Analysis of ONS, Living Costs and Food Survey.

Proportion of all adults making energy efficiency improvements and/or spending less on food and essentials due to increases in the cost of living, by deprivation quintile: England

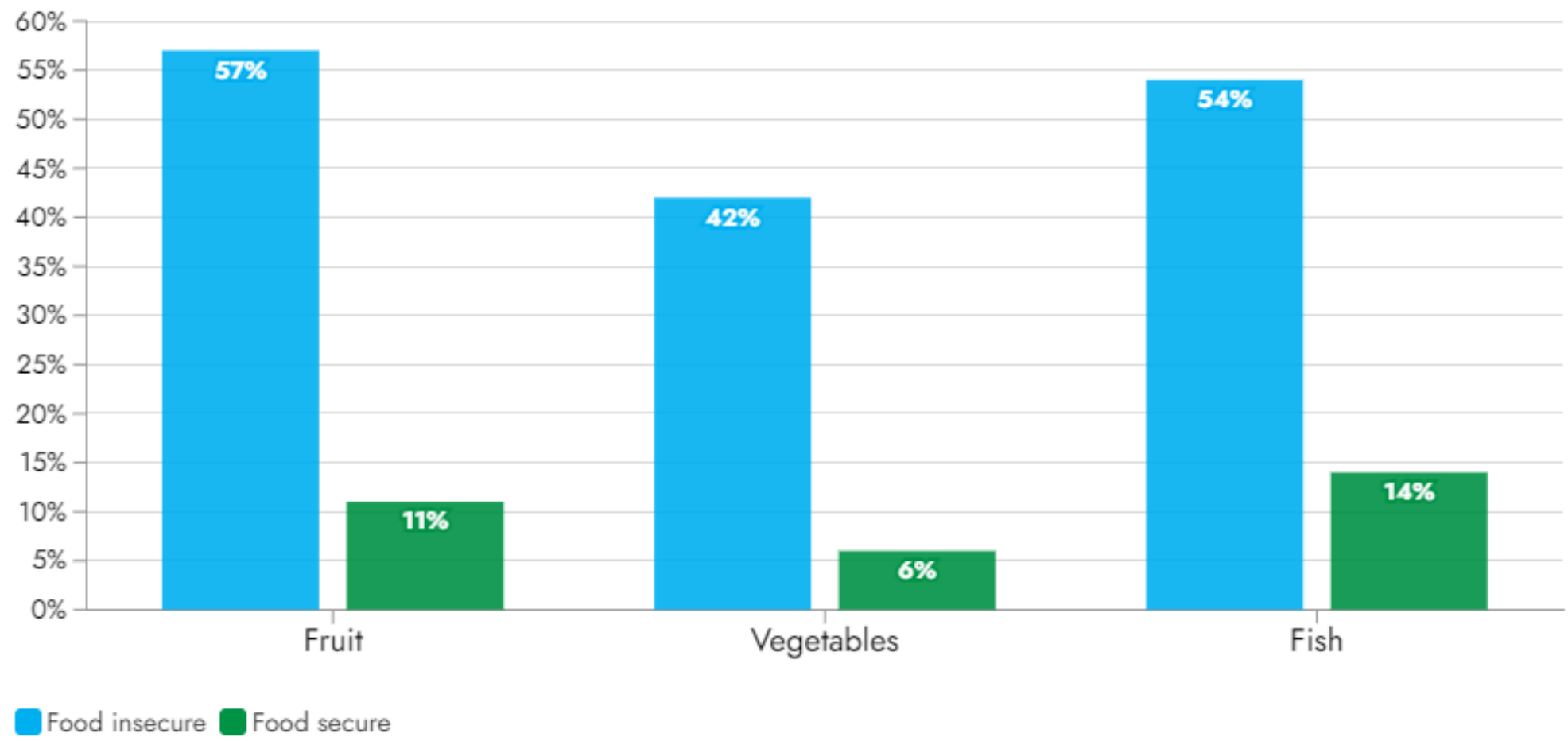


Notes: The survey results are based on the period between 8 to 20 November 2022
Source: ONS, Public opinions and social trends

3.2 million adults (6.1% of households) reported not eating for a whole day because they couldn't afford or access food; Percentage of households experiencing food insecurity

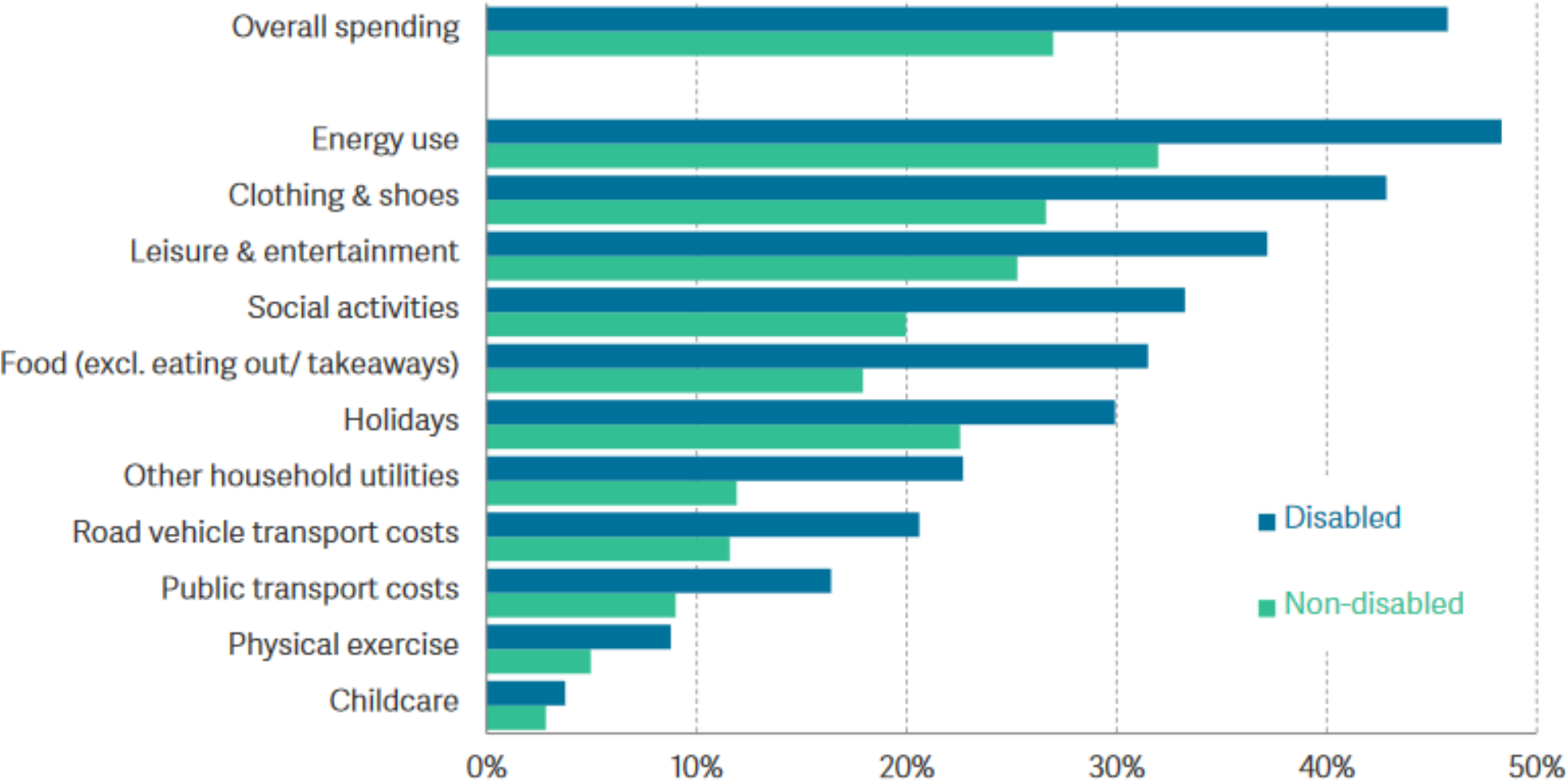


Percentage of households reporting buying less of each food type, Jan 2023



For more on how the cost of living crisis is impacting on diets , read our briefing: , [From purse to plate: implications of the cost of living crisis on health](#)

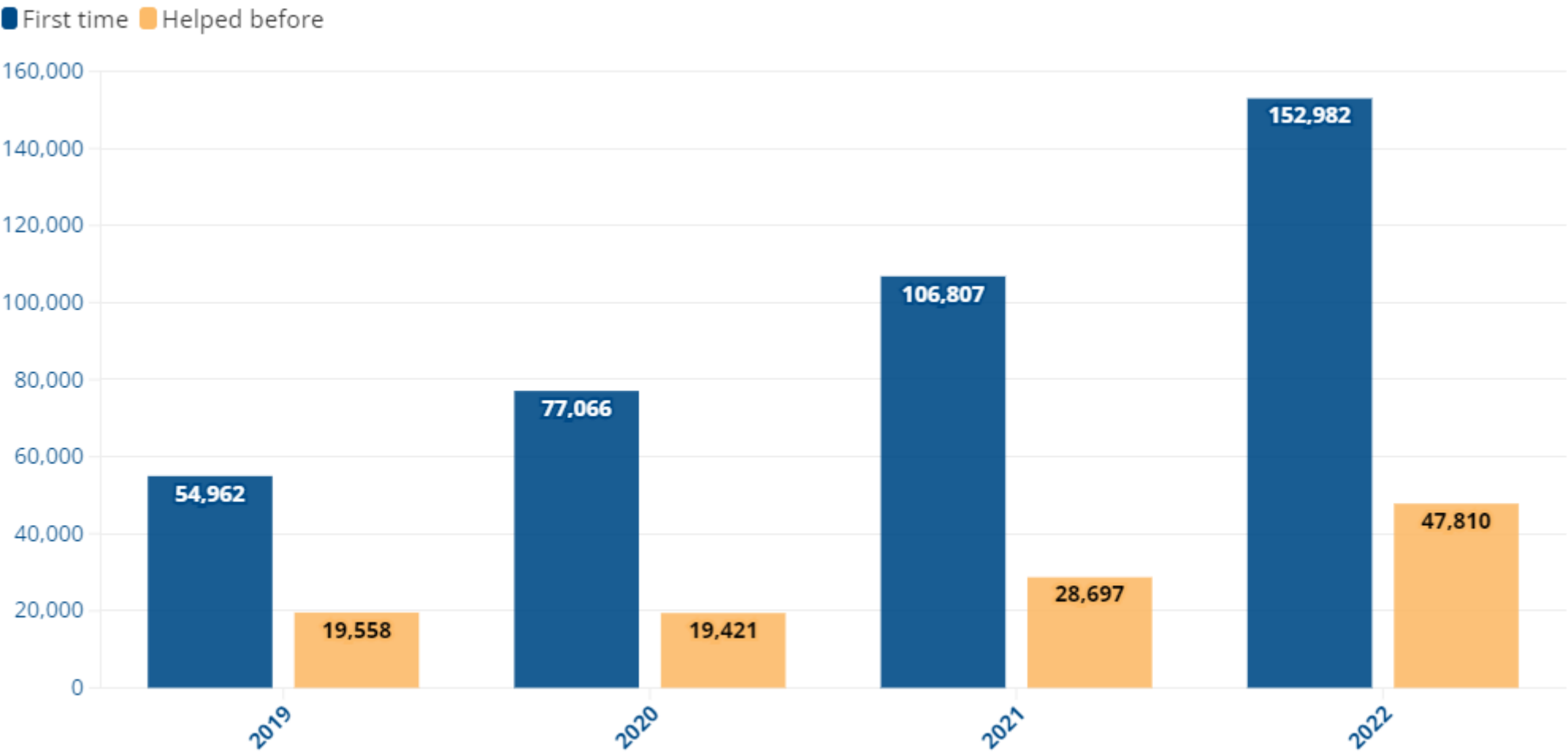
% disabled and non-disabled population who have tried to cut back spending over a range of categories: UK, November 2022



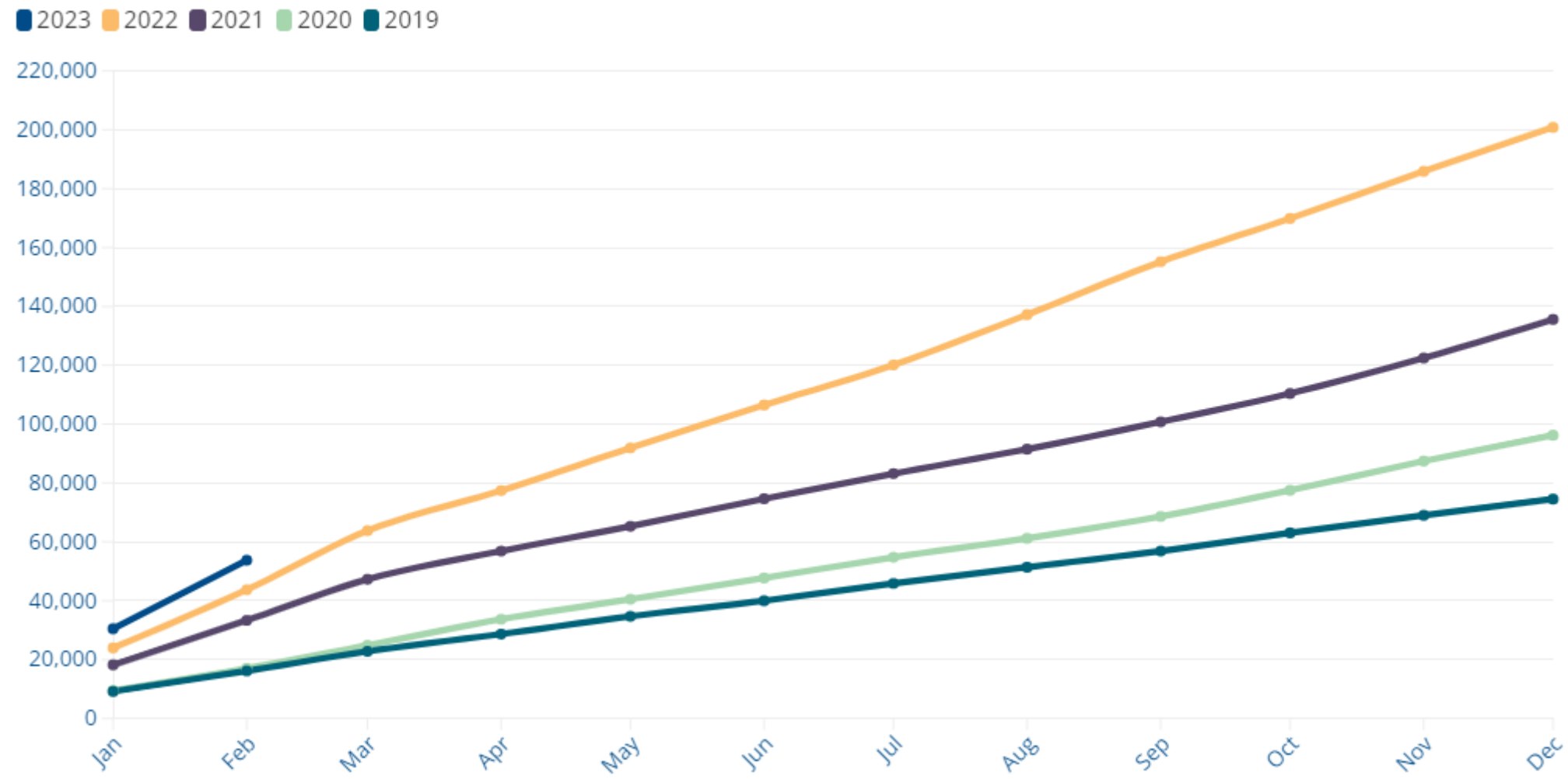
■ Disabled
■ Non-disabled

Source: Resolution Foundation

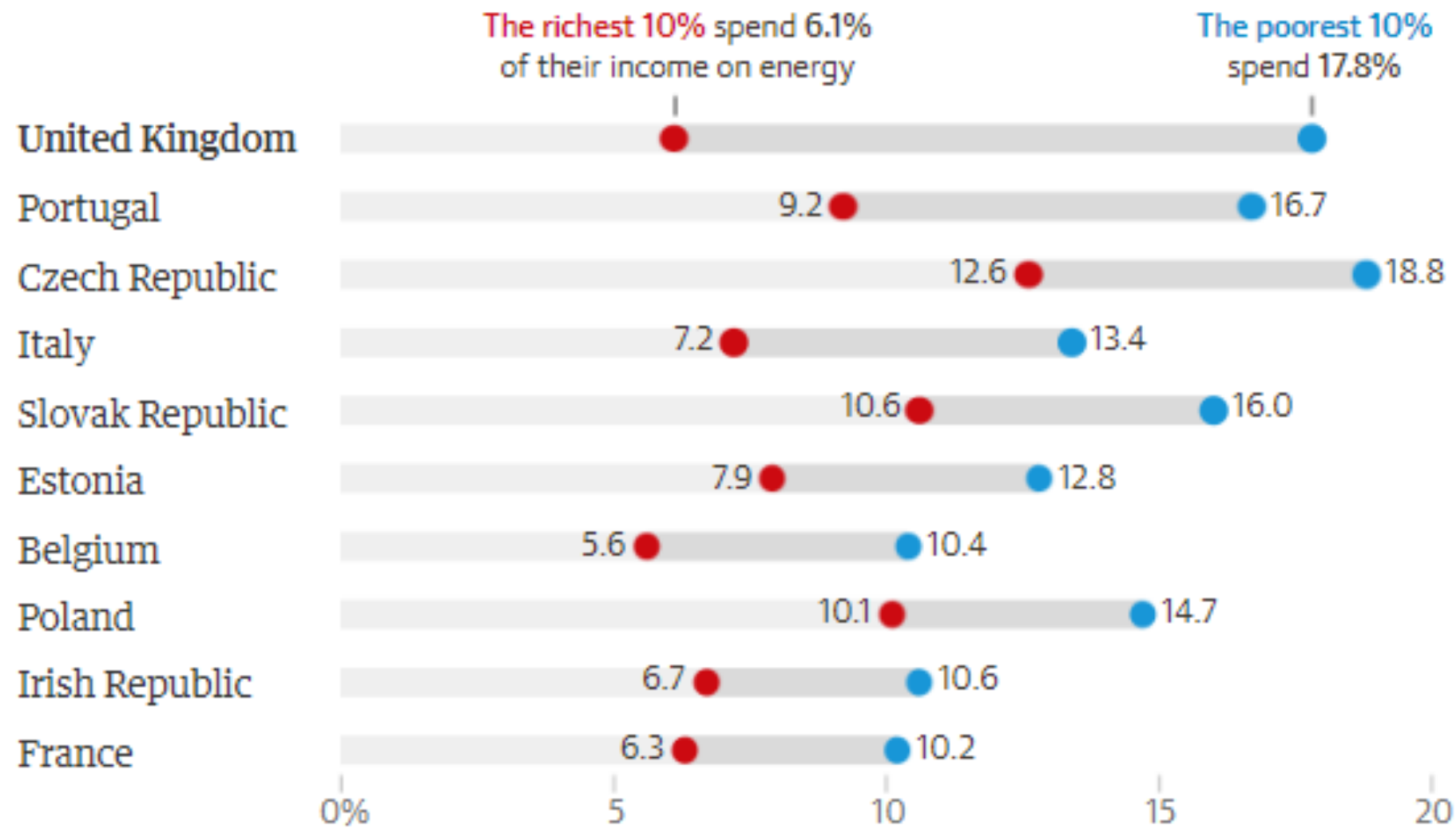
Citizens Advice helped with crisis support for first time or helped before, 2019-2022



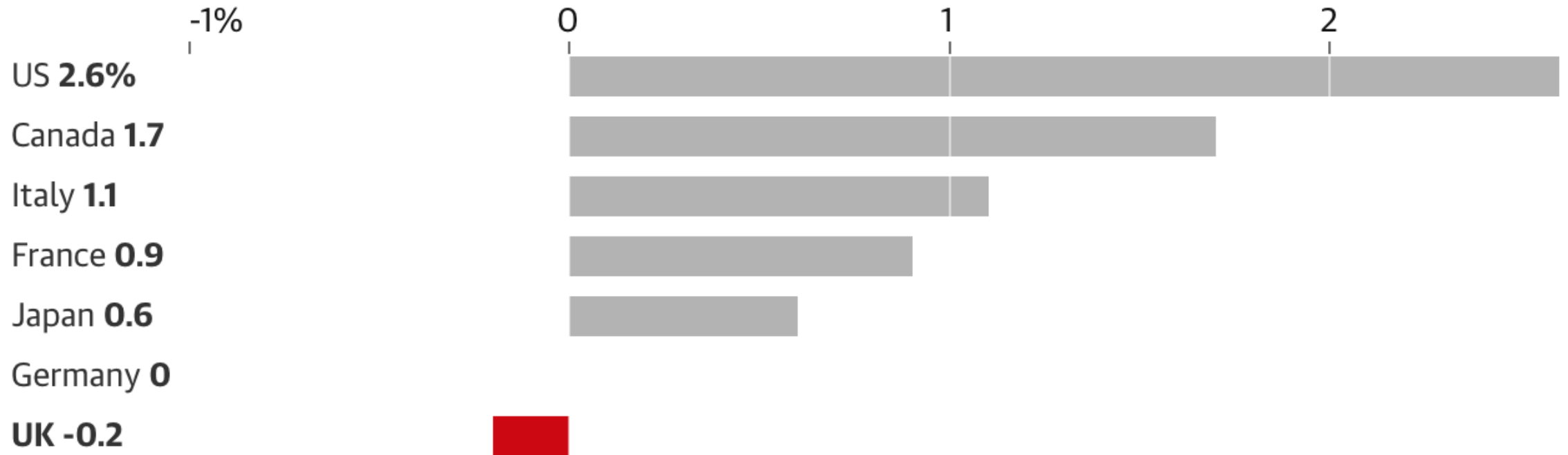
Cumulative number Citizens Advice helped with crisis support, 2019-2023



UK – biggest gap between richest and poorest in energy costs as proportion of income: Percent of household budget spent on energy, 2022

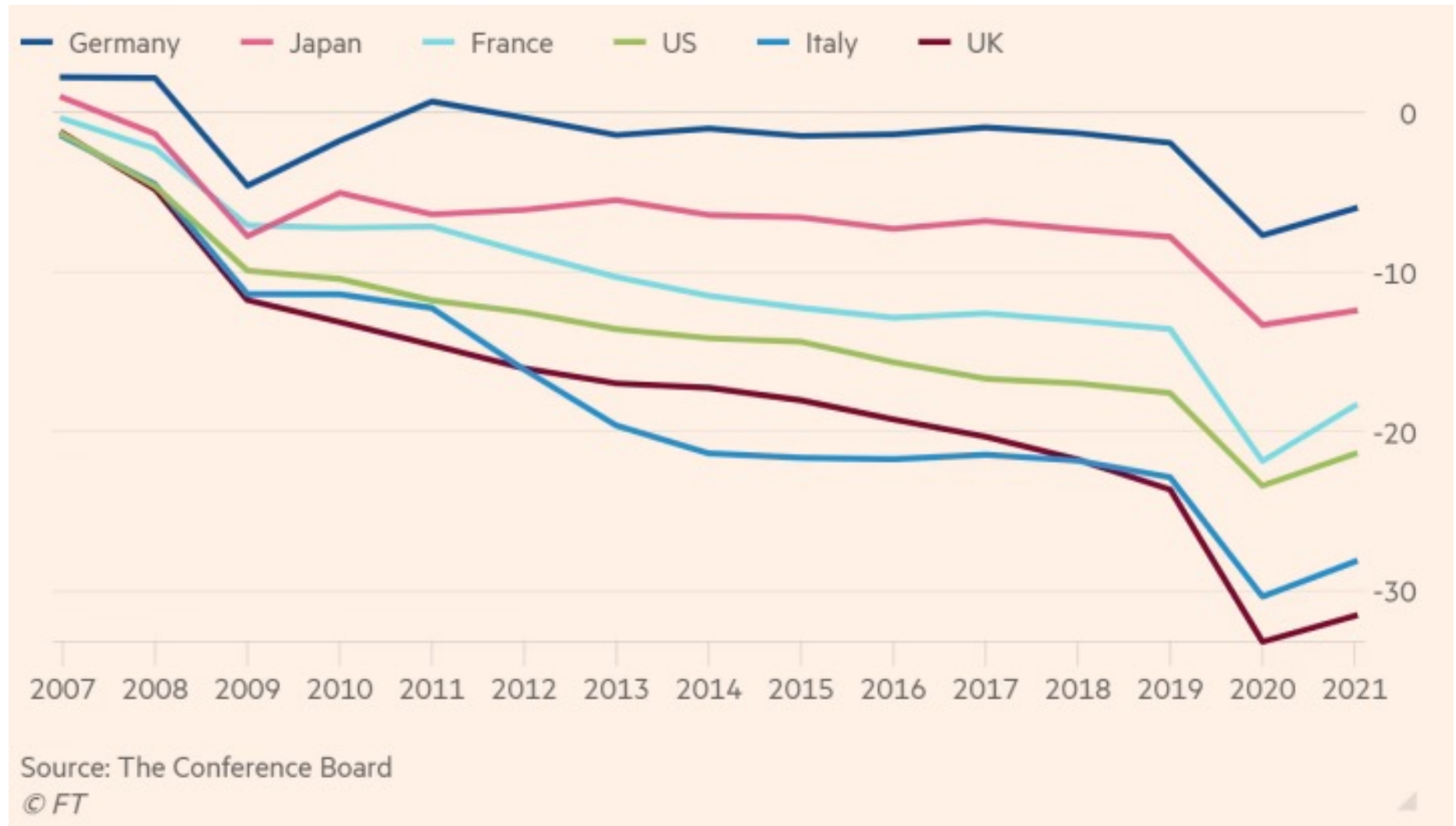


UK the only G7 economy not yet recovered to pre-pandemic levels of GDP: Percent change, Q4 2019- Q2 2022



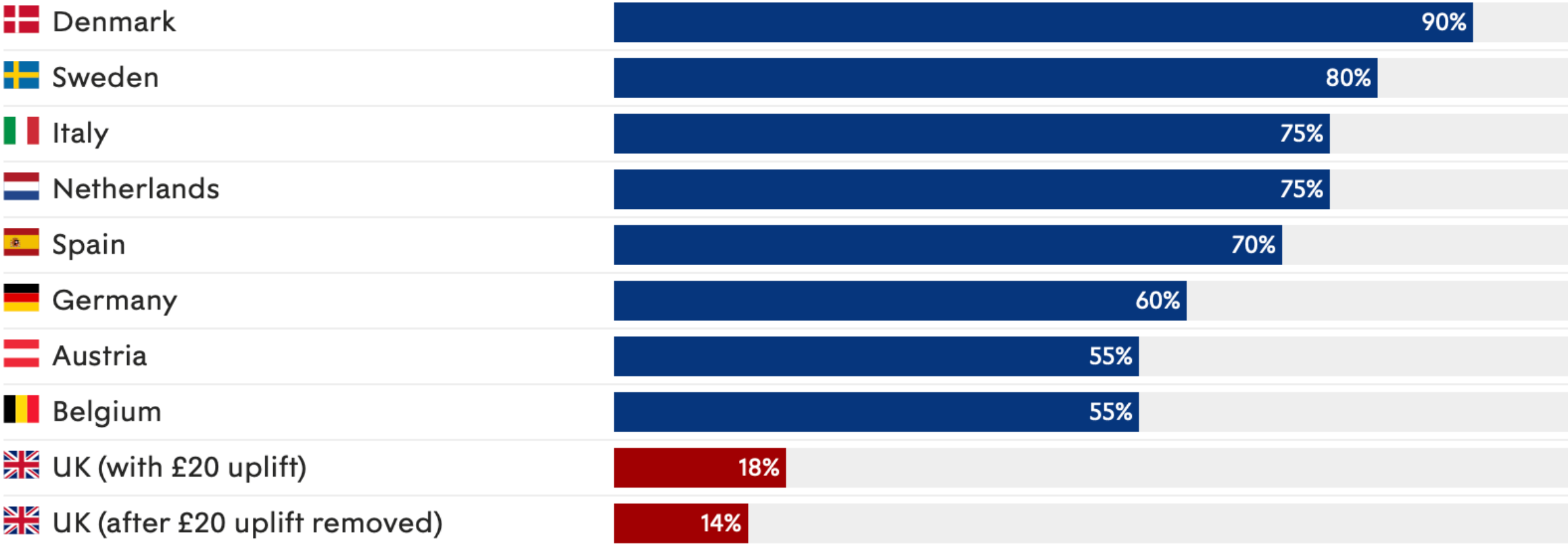
Guardian graphic. Source: ONS

Cumulative shortfalls in GDP since the financial crisis: Real GDP per head, % deviation from 1990-2007 trend



Universal credit: worth less than a fifth of average earnings, even with temp uplift

Standard rate unemployment benefits for a single person, as a % of previous earning



Note: UK benefits are fixed amount, not proportional, so are shown as a percentage of average UK earnings.

Source: MISSOC • Get the data

Food and energy billionaires \$453bn richer than two years ago, finds Oxfam

While elite gather in Davos, charity calls for wealth tax after rich benefit from soaring energy and food prices



📷 Grain falls from a combine harvester into a trailer during a harvest in Ukraine before the invasion by Russia. Photograph: Vincent Mundy/Bloomberg/Getty Images

COVENTRY – A MARMOT CITY

An evaluation of a city-wide approach to reducing health inequalities



ALL TOGETHER FAIRER: HEALTH EQUITY AND THE SOCIAL DETERMINANTS OF HEALTH IN CHESHIRE AND MERSEYSIDE

INSTITUTE of
HEALTH EQUITY



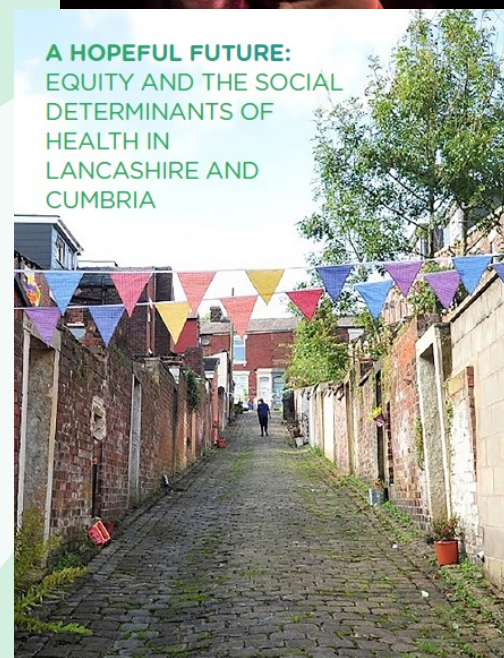
INSTITUTE of
HEALTH EQUITY

REDUCING HEALTH INEQUALITIES IN LUTON: A MARMOT TOWN



INSTITUTE of
HEALTH EQUITY

BUILD BACK FAIRER IN GREATER MANCHESTER: HEALTH EQUITY AND DIGNIFIED LIVES



A HOPEFUL FUTURE: EQUITY AND THE SOCIAL DETERMINANTS OF HEALTH IN LANCASHIRE AND CUMBRIA

INSTITUTE of
HEALTH EQUITY

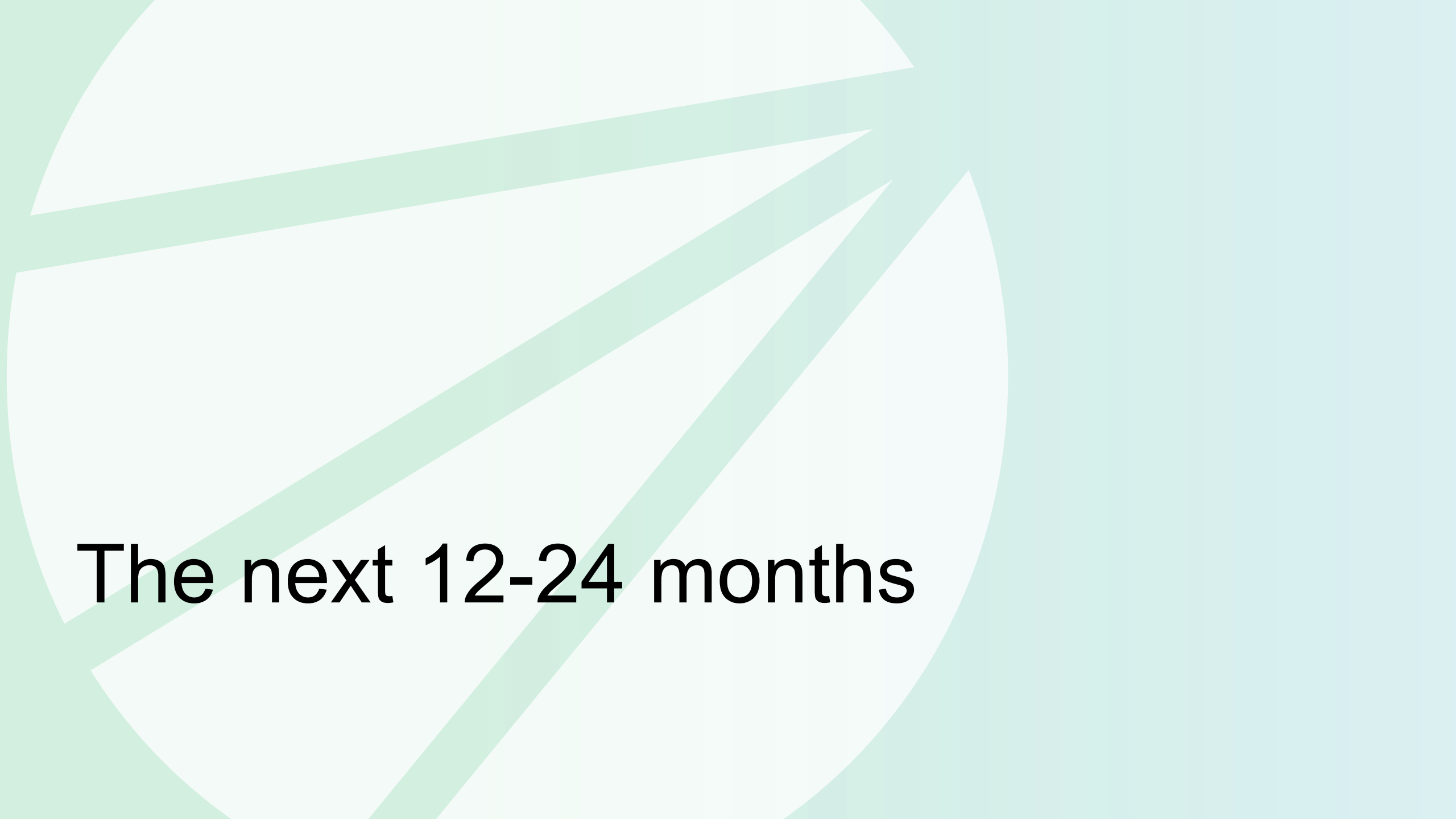


INSTITUTE of
HEALTH EQUITY

A FAIRER AND HEALTHIER WALTHAM FOREST: EQUITY AND THE SOCIAL DETERMINANTS IN WALTHAM FOREST

Upcoming

- Gwent
- South West
- Leeds



The next 12-24 months

Still much to do

- Recommendations are 5 years
 - E.g. How implementing 2023/27 approaches?
- Marmot Beacon Indicators
 - Tracking?

1. GIVE EVERY CHILD THE BEST START IN LIFE		
2022/23	2023/27	RELATED MARMOT INDICATOR
Responsible: Place <ul style="list-style-type: none">• Review inequitable outcomes in early years and bring systems together within each place to ensure equitable early intervention, involving all partners (such as education, social care - children's services, communities and the VCFSE sector, children's boards, public services, NHS, local authorities).• Assess early years provision and parental support within each place and provide further support for early years settings in more deprived areas and in collaboration with communities in these areas and / or families with disabilities, or English as a second language for example.• Assess how the ACEs agenda links to the early years approach in Cheshire and Merseyside and ensure families' voices are included in this agenda.	Responsible: Place <ul style="list-style-type: none">• Work in partnership to improve school readiness for all and reduce inequalities between children eligible and not eligible for free school meals. Ensure support is focussed to develop children's early learning, especially with regard to speech and language skills and the ACEs agenda.• Ensure shared accountability across the system and within each place to give every child the best start in Cheshire and Merseyside (include children's public health, early years and wider family services including education and VCFSE sector).	3 Percentage of children achieving a good level of development at 2-2.5 years (in all five areas of development). 4 Percentage of children achieving a good level of development at the end of Early Years Foundation Stage (Reception).
Responsible: Cheshire and Merseyside System <ul style="list-style-type: none">• Assess maternity leave policies and support for child care by all employers, including private business.	Responsible: Cheshire and Merseyside System <ul style="list-style-type: none">• Develop a region-wide childcare workforce standard, which includes training and qualifications on the job to a higher standard and pay than national requirements.	

Marmot Principles



1. Give every child the best start in life
2. Enable all children, young people and adults to maximise their capabilities and have control over their lives
3. Create fair employment and good work for all
4. Ensure healthy standard of living for all
5. Create and develop healthy and sustainable places and communities
6. Strengthen the role and impact of ill health prevention
7. Tackle racism, discrimination and their outcomes
8. Pursue environmental sustainability and health equity together

The future of Marmot places?

RCP welcomes Labour's
'health mission' and its plans
to tackle health inequalities

**Labour would shift focus of health funding to
primary care, says Wes Streeting**

**Labour vows to increase number of community nurses and health
visitors**

**Starmer unveils Labour health targets
pledge to make NHS 'fit for the future'**

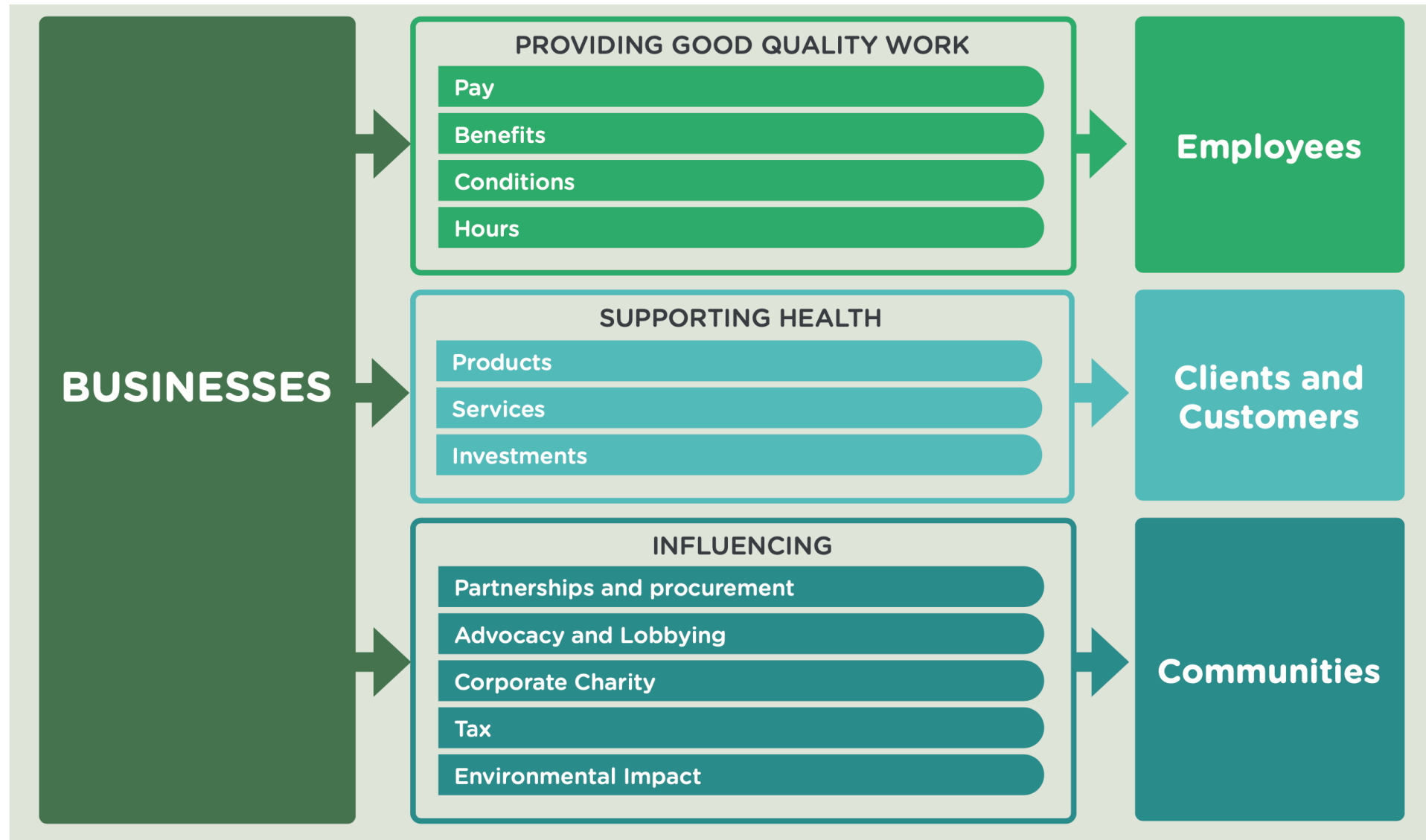
"The next Labour government...will amplify the approach of 'Marmot Cities' like Greater Manchester and Coventry by making England a Marmot country, tackling the social inequalities that influence health. We will ensure that children have the best start possible to give them the building blocks for a healthy life, build on Labour's legacy towards a smoke-free Britain, and empower people to take responsibility for their own health."

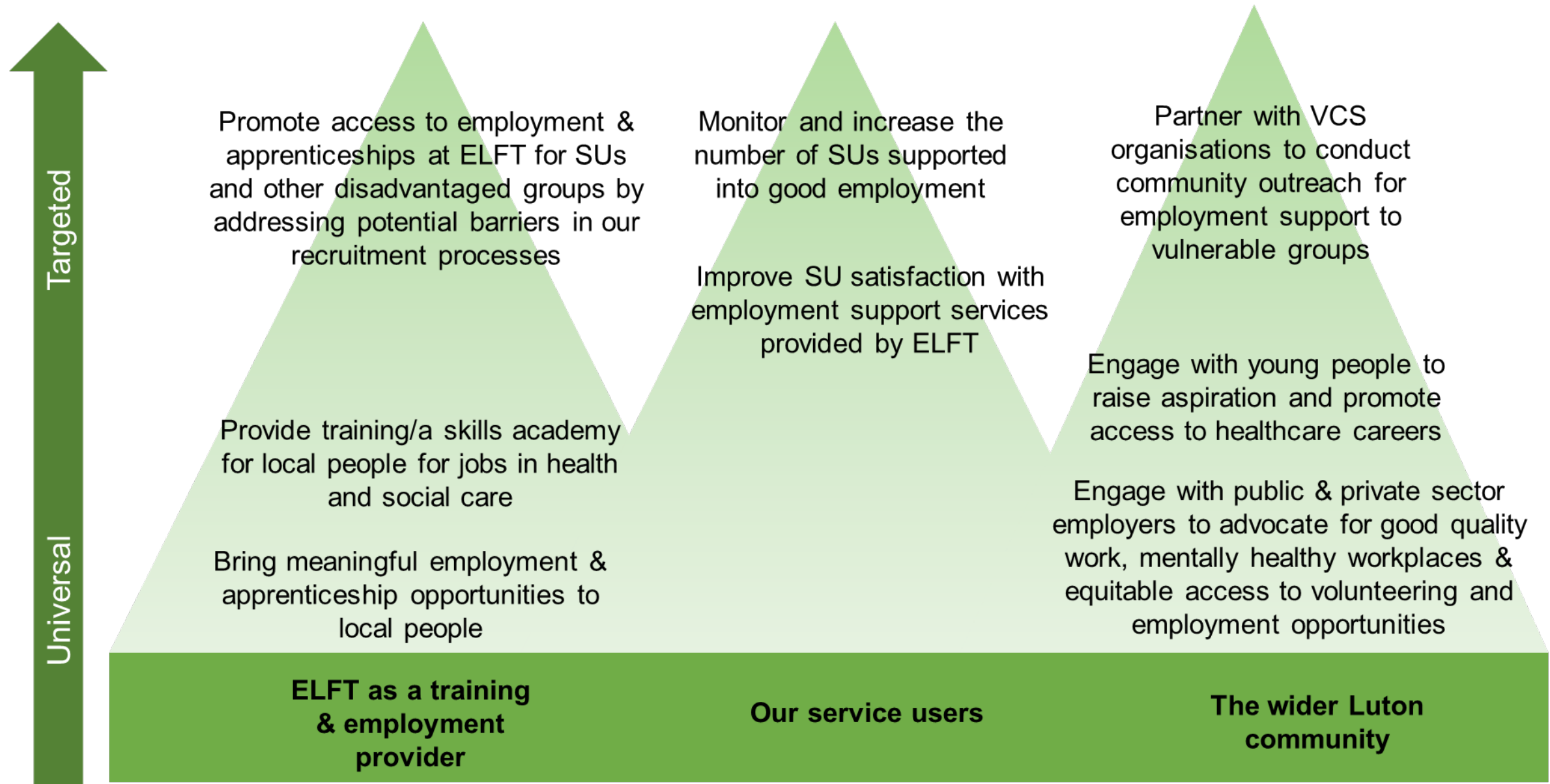
Working with businesses



**THE BUSINESS OF HEALTH EQUITY:
THE MARMOT REVIEW FOR
INDUSTRY**

How businesses shape health: IHE framework





Establishing good working relationships with community partners & employers

Hidden workers



- Legal and general improving conditions for their hidden workforce
- Working across city to get companies on to do the same
- Working with public health teams

Building a movement



INSTITUTE of
HEALTH EQUITY



Legal &
General

The Health Equity Network

Register for the Health Equity Network here:
<http://bitly.ws/zh2g>

or scan this QR Code with your phone camera:



SCAN ME

HEALTH EQUITY NETWORK NATIONAL CONFERENCE



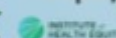
Join the conference to access
Network Member lead workshops
that will aim to build the
momentum for health equity
across the UK and soon the world.

OCTOBER 5, 2023

10 AM - 4PM

COUNCIL HOUSE,
VICTORIA SQUARE,
BIRMINGHAM B1 1BB

Register your interest at the link below*
<https://forms.gle/rMGJP7GfNMjN824d8>



Follow on report in 2023

Commission on Social Determinants of Health FINAL REPORT



Closing the gap in a generation

Health equity through action on
the social determinants of health





One year on: health equity in Cheshire and Merseyside

Professor Michael Marmot

@MichaelMarmot

<http://www.instituteofhealthequity.org>

<http://www.instituteofhealthequity.org>